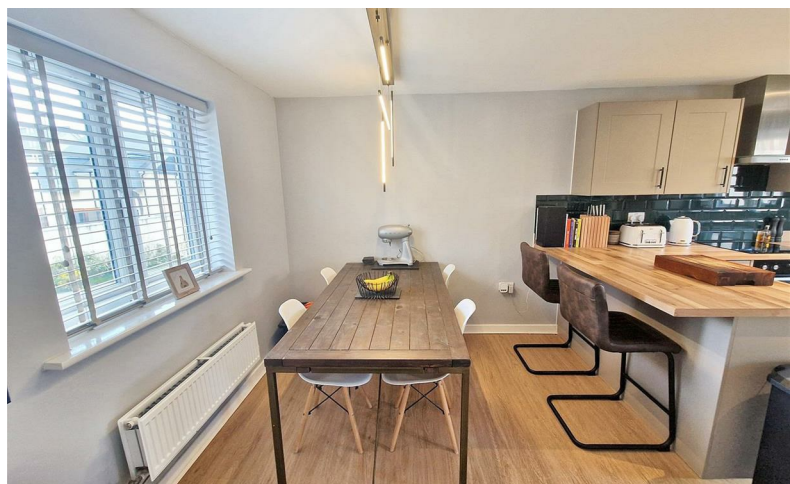


Philip Martin

LETTINGS LIMITED



Philip Martin



PARK KERWYS, TRURO

£1,595 PCM

www.philip-martin.co.uk

1 PARK KERWYS, TRURO, CORNWALL, TR1 2FX

A detached modern house which is situated in the development of Copperfields on the edge of Truro. The property offers three bedrooms, master en-suite and family bathroom to the first floor with lounge, kitchen/dining room, utility and w.c. to the ground floor. There is parking, garage and a private and enclosed rear garden. Pets considered.

- Gas Fired Central Heating
- Pets Considered
- Available in Mid March
- Council Tax Band D
- Good Sized Enclosed Rear Garden
- Double Glazed Windows
- Garage and Parking
- Deposit £1840
- EPC B
- Initial Fixed Term of 6 Months

LOUNGE

KITCHEN/DINING ROOM

UTILITY

CLOAKROOM

BEDROOM 1

En-suite

BEDROOM 2

BEDROOM 3

BATHROOM

CREDIT REFERENCES AND DEPOSIT

Prospective tenants will be required to complete an application form and if successful will have to pay a holding deposit equivalent to 1 weeks rent. At that stage we will carry out a credit reference and only once the referencing is successfully completed will the property be formally offered. Prior to occupation the balance of the first months rent and a deposit equivalent to 5 weeks rent will be payable.

DIRECTIONS

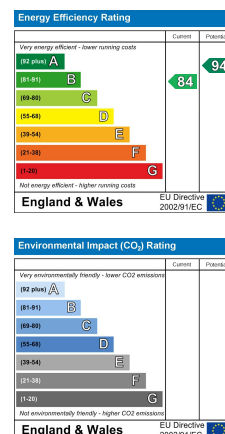
From the A390 turn into the Copperfields Development where the property will be found near the bottom of the estate.

CONTACT US

6 Cathedral Lane
Truro
Cornwall
TR1 2QS

01872 272716

lettings@philip-martin.co.uk



RICS

rightmove



nTheMarket.com